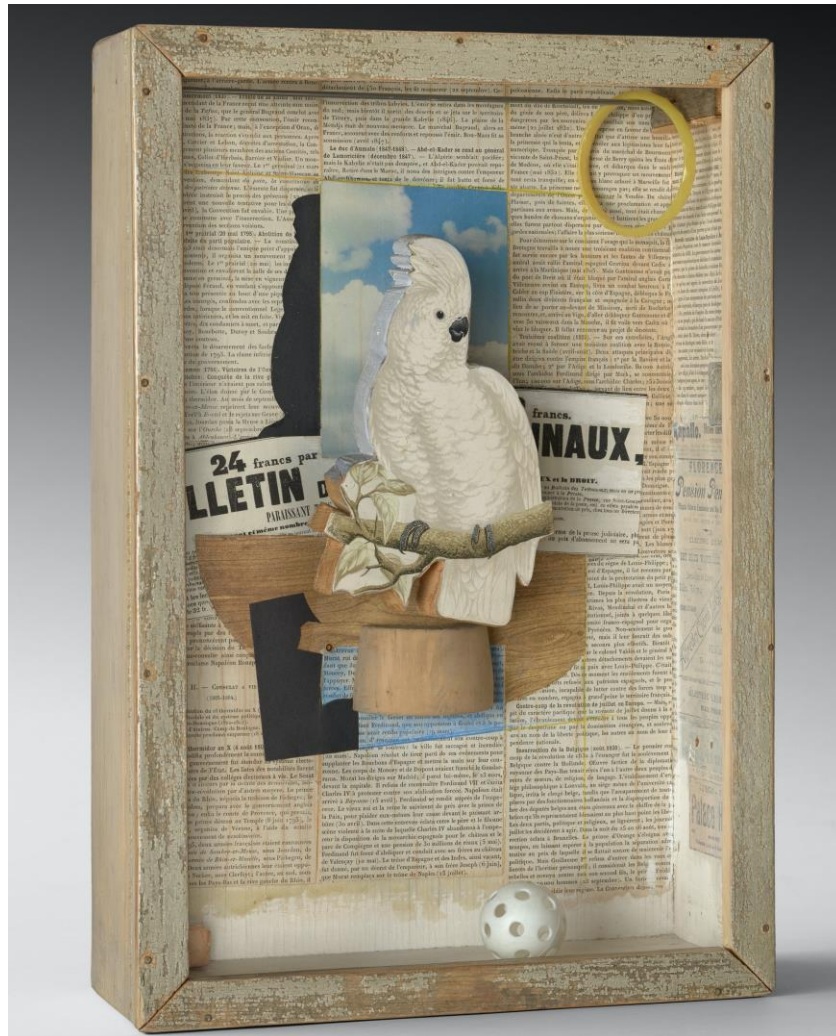


## Picturing Peace Week

### Create Your Own Shadowbox

Artist Joseph Cornell was a pioneer of assemblage art. He is most known for his glass-fronted shadow boxes. A shadow box is a glass-front display that contains objects of artistic or personal significance. Channel Joseph Cornell and create your own personal shadow box.



Joseph Cornell, "Homage to Juan Gris," 1953–54, Philadelphia Museum of Art  
© Visual Artists and Galleries Assoc., Inc., New York, NY

**Duration:** 1 hour

## **Materials:**

- Photos, images, ticket stubs, memorabilia
- Glue or rubber cement
- Box
- Box cutter or good scissors (*optional*)
- Plastic wrap or sheet protector (*optional*)
- Ribbon, newspaper, decorative paper (*optional*)
- Imagination



## **Instructions:**

1. Think about the items, photos, and memorabilia that you would like to include in your shadow box. Do you want a theme or timeframe? Do you want to include your favorite things?
2. Once you have all your items, use a box cutter or pair of scissors to cut your box down to about 2-3" deep if your box is deeper.
3. There are two ways to assemble your shadow box:

- **Option 1:** Lay out your items in the box. You can use newspaper, decorative paper, or ribbons as a background to create depth. Once you are satisfied with your layout, glue your items to the box. You may want to wrap and glue plastic wrap to the front of your box to protect it and simulate glass.



- **Option 2** (for thin objects like photos or ticket stubs): Cut a slit in the top of your box. Wrap and glue plastic wrap to the opening of your box. Slip your items into your shadowbox and let them arrange themselves inside.
4. Display your shadow box!
  5. Send a photo to [Heather@mattmuseum.org](mailto:Heather@mattmuseum.org) and share the story behind your shadowbox.