

Charles Ethan Porter

Still Life Collage

Duration: 45 minutes

Materials:

- Stiff piece of paper, such as oak tag from a manila folder or cardboard
- A piece of paper to use as a background
- Magazine or newspaper cutouts
- Scissors
- Glue
- Paintbrush or foam brush (*optional*)



Instructions:

1. Glue down a sheet of colored paper onto a stiffer sheet of paper or cardboard the same size.

Trim down to an 8 ½” x 11” size to make it easier to work with.

2. Cut out various objects from magazines and newspapers.

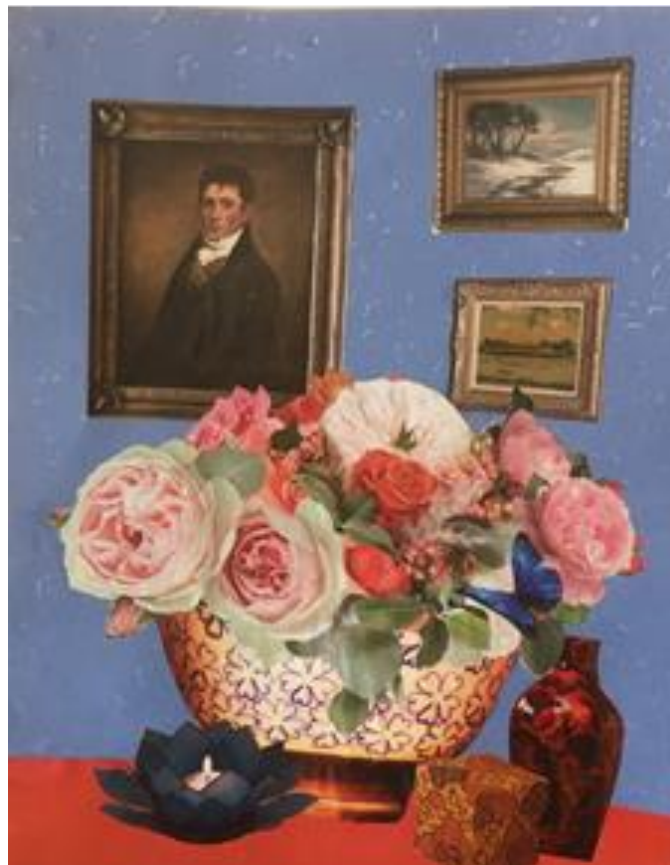
Consider including a vase, table, and wall decorations such as paintings, a mirror, or windows. Think about the size of each cutout and how the objects will look together. You might want to coordinate colors and styles to create a coherent space.

3. Glue down a surface or table on the bottom portion of your still life.

4. Next, glue down desired wall decorations on the upper half of your paper. This will become the background wall.
5. Now, glue down your vase, bowl, or other flower container on the “table”.
6. Finally, glue down the cut out flowers and leaves to fill your vase.

Place some over the vase edge for more dimension. If some of the flowers overlap decorations on the background wall, that’s fine too. Overlapping makes the picture more three-dimensional.

Be sure to make the vase and flowers the focal point, the most important in your picture.



Send your creations to heather@mattmuseum.org and we will share them on the Museum’s social media!